

## DATA SHEET

## soni CUBE

- ▶ Our **soni CUBE** seat cubes are sound absorbers of a special kind, because in addition to effective sound-conditioning of interior spaces, they score with excellent seating comfort. The core of the cubes consists of a highly effective acoustic absorber. The outer shell is made from a dirt-resistant, abrasion-proof and flame-retardant felt material available in the latest trend colors.
- ▶ **soni CUBE** can be placed individually, grouped or stacked. If you like, you can insert a metal spiral (available from soniflex) into one of the corners and suspend your **soni CUBE** from the ceiling using a rope or hook – an easy and effective installation method.



## TECHNICAL DATA

<b>FLAMMABILITY ACOUSTIC ABSORBER</b>	<ul style="list-style-type: none"> <li>▶ DIN 4102, tested according to B1 (flame-retardant)</li> <li>▶ DIN EN 13501-1: C-S2, d0</li> <li>▶ Fulfills the strict fire safety standard for the automotive industry (FMVSS 302, DIN 75 200)</li> <li>▶ ISO 3795, burning rate &lt; 100 mm/min</li> </ul>
<b>FLAMMABILITY OF FELT COVER</b>	▶ DIN EN 13501-1+A1: B-S1-d0
<b>COLORFASTNESS TEST OF FELT COVER</b>	▶ DIN EN ISO 105-B02: 6-7
<b>ABRASION RESISTANCE OF FELT COVER</b>	▶ ISO 12947-2: > 50.000 rubs
<b>COLOR</b>	<ul style="list-style-type: none"> <li>▶ Orange ▶ Green ▶ Beige ▶ Blue</li> <li>▶ Light grey ▶ Pink ▶ Anthracite ▶ Red</li> </ul>



Directly to the product |  
Color selection

## DIMENSIONS

PRODUCT	DIMENSION [mm]	WEIGHT
CUBE	400 X 400 X 400	800 g
	200 X 200 X 200	130 g

## ADVICE

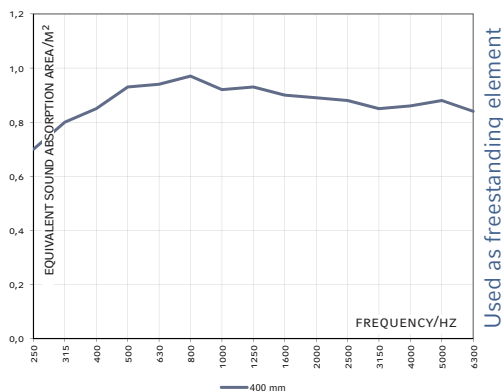
- ▶ There might be minimal color variations between different lots
- ▶ Can support up to 100 kg

## VORTEILE

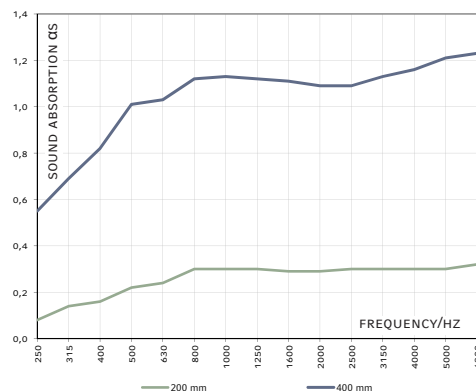
- ▶ Noise reduction combined with practical uses / Excellent noise absorption
- ▶ Wide range of colors to fit your individual design concept
- ▶ Abrasion-resistant, robust and colorfast felt cover

## REVERBERATION ROOM

- ▶ Based on DIN EN ISO 354



Used as freestanding element



Suspended from the ceiling

## SONI CUBE-SUSPENDED



## PLEASE SEE OUR PROCESSING AND STORAGE INSTRUCTIONS

Details and values given in this leaflet are average values and have been compiled with care. They are not binding, however, and Cellofoam International GmbH & Co. KG disclaims any liability for any damages and detriments, also in connection with any third party's rights. The information given does not release the buyers from making the necessary experiments and tests themselves. Subject to technical changes. For updates please go to our website.

Cellofoam International GmbH & Co. KG  
Business unit soniflex  
P: +49 7351 340 28 61  
sales@soniflex.de / www.soniflex.de

## VERSION 09/23

Distribution partner for Switzerland:  
soniflex Switzerland  
P: +41 44 377 60 50  
einkauf@soniflex.ch / www.soniflex.ch